



SECUJET® 2.0

Precoat candle filter



The smart candle filter for precoat filtration

- Compact design
- Easy handling
- High flexibility

Characteristics

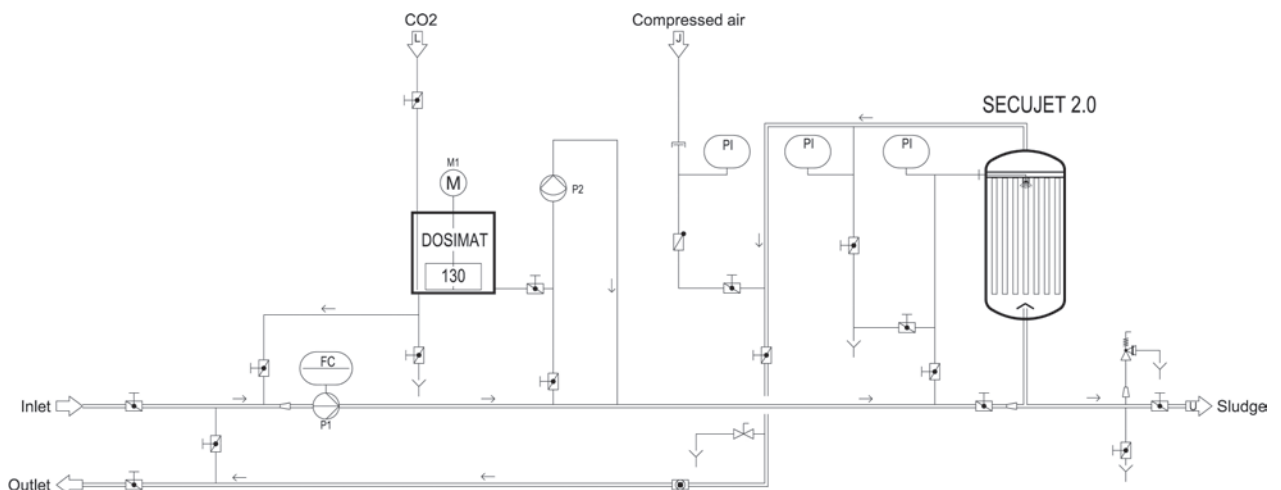
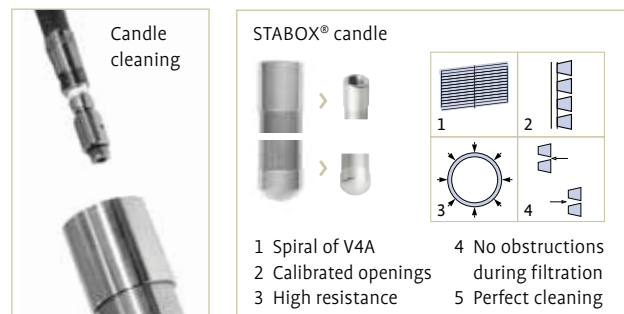
The SECUJET® 2.0 is the advanced version of the former Secu-jet candle filter but with hanging candles from a top plate. The design of the filter and the usage of the same STABOX candles (25 mm diameter) make it the small version of the large SYNOX® filters.

Applications

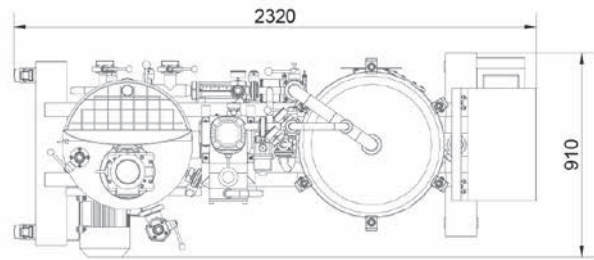
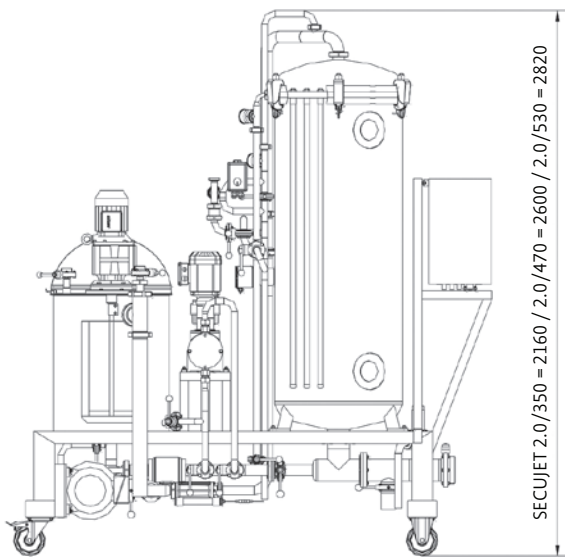
The SECUJET® 2.0 was developed with the focus on the rising amount of small Craft-Breweries worldwide and their increasing demand for filtered beer. But also for any other beverage to be filtered with filter aid like diatomaceous earth this filter will be a reliable solution.

Advantages

- compact skid mounted design
- movable with wheels
- low water and energy consumption
- long service life due to high quality design
- very little maintenance required, no moving parts inside
- efficient cleaning device inside the vessel
- dosing pump separately mounted on the skid for easy maintenance



Type	SECUJET 2.0 /350	SECUJET 2.0 /470	SECUJET 2.0 /530
Operating pressure	0–6 bar	0–6 bar	0–6 bar
Operating temperature	0–100 °C	0–100 °C	0–100 °C
Max. flow rate (@ 5 hl/m ² /h)	32 hl/h	47 hl/h	55 hl/h
Min. flow rate (@ 2.5 hl/m ² /h)	16 hl/h	23 hl/h	27 hl/h
Sludge volume	141 ltr	201 ltr	226 ltr
Filter area	6.4 m ²	9.4 m ²	11 m ²
Number of candles	60 pcs	60 pcs	60 pcs
Candle length	945 mm	1381 mm	1603 mm
Total DE Capacity	41.3 kg	59.2 kg	66.5 kg
Precoat Charge DE (@ 1.2 kg/m ²)	7.7 kg	11.3 kg	13.2 kg
Body Feed Charge DE (Total minus precoat)	33.7 kg	47.9 kg	53.3 kg
Volume of dosing tank	130 ltr	130 ltr	130 ltr
Performance of dosing pump	0.75 kW	0.75 kW	0.75 kW
Dosing flow rate	16–160 l/h	16–160 l/h	16–160 l/h
Performance of process pump	5.5 kW	5.5 kW	5.5 kW
Weight of complete unit (empty)	780 kg	840 kg	880 kg
Weight of complete unit (operating)	1300 kg	1480 kg	1580 kg



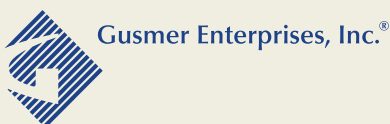
All dimensions in mm.

Bucher Filtrix Systems AG – Let's be clear!

Bucher Filtrix Systems AG is the world leading manufacturer of turn-key filtration systems for the beverage industries. Apart from the well-known candle filter for the pre-coat filtration with Kieselgur and PVPP, **Bucher Filtrix Systems AG** also develops, designs, and manufactures other advanced technologies such as filters for sugar syrup filtration, filter systems for beer-recovery and much more.

Bucher Filtrix Systems AG is a business partner with a long-term industrial focus, committed to fair partnership with our customers, employees, and business associates.

Technical changes reserved.



Gusmer Enterprises, Inc.®

North American Distributor
 Gusmer Enterprises
 West Coast Tel: 866.213.1131 Fax: 559.485.4254
 East Coast Tel: 908.301.1811 Fax: 908.301.1812
 sales@gusmerenterprises.com
 www.GusmerBeer.com